



Business Activity Profile

February 2016

At a glance

The following table compares current month data with the previous month and the same time previous year.

Service/Product description	Comparison		
	Feb 2016	Jan 2016	Feb 2015
Total Document Lodgements	24,723	21,495 15.02%	26,213 5.68%
Transfer Lodgements	5,064	4,853 4.35%	5,759 12.07%
Mortgage Lodgements	6,735	6,111 10.21%	7,440 9.48%
Searches	130,809	115,180 13.57%	150,146 12.88%
Electronic Advice of Sale Lodgements	5,078	4,649 9.23%	6,015 15.58%
Subdivisional Lots Created	1,343	1,014 32.45%	1,612 16.69%
Strata Lots Created	976	1,049 6.96%	1,038 5.97%
New Lots Created	2,319	2,063 12.41%	2,650 12.49%
Strata Plan and Survey Strata Plan Lodgements	240	169 42.01%	197 21.83%



Celebrating International Women's Day 2016.

Landgate celebrates International Women's Day

Landgate has celebrated International Women's Day with a presentation by Michelle Sandford, a global information technology service delivery manager and keynote speaker at TEDxPerth 2014.

Ms Sandford's presentation was heard by representatives from the City of Swan, the Midland community, local businesses and school students.

Landgate Chief Executive Mike Bradford said this year's theme of 'Pledge for Parity' was highlighted during Ms Sandford's speech.

"We were joined by a number of students with an interest in technology and innovation," Mr Bradford said.

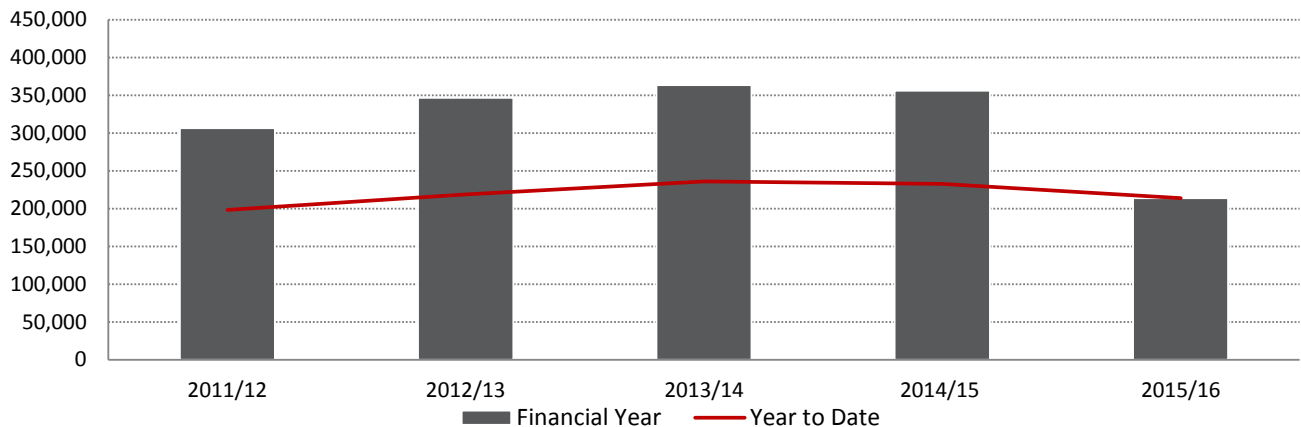
"Ms Sandford provided insightful advice to the students about being innovative and proactive when learning about their chosen fields.

"She used examples of young people who have taught themselves skills which have led to achievements such as profitable apps and said this type of initiative was highly regarded by employers.

"Landgate values information technology. We are an innovative agency that has a leading role in providing location information and open data."

Total Document Lodgements, by financial year

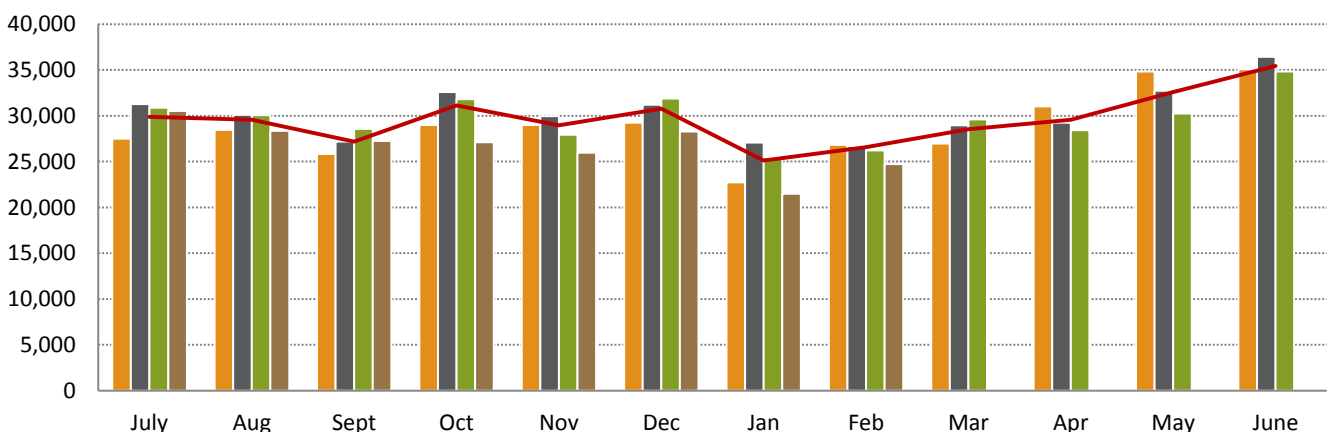
Total document lodgements 2015/16 year to date (213,767) reflect an 8.21% decrease when compared to the same time 2014/15 (232,885).



Financial Year	11/12	12/13	13/14	14/15	15/16 YTD
Total Lodgements July to June	306,558	346,610	363,477	356,010	
Total Lodgements Year to Date	198,221	218,686	236,089	232,885	213,767

Total Document Lodgements, by month

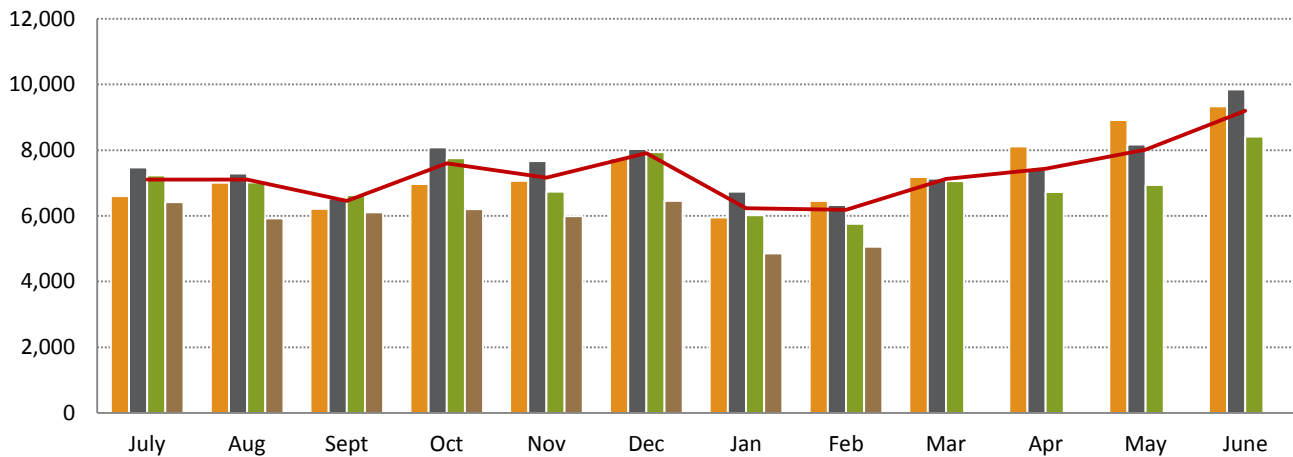
The number of documents lodged in February 2016 (24,723) increased 15.02% from the previous month (21,495) and decreased 5.68% from February 2015 (26,213).



	July	Aug	Sept	Oct	Nov	Dec	Jan	Feb	Mar	Apr	May	June
12/13	27,515	28,481	25,847	29,007	29,006	29,264	22,732	26,834	26,984	31,041	34,828	35,071
13/14	31,263	30,118	27,174	32,606	29,965	31,201	27,093	26,669	28,956	29,261	32,748	36,423
14/15	30,898	30,068	28,560	31,816	27,949	31,898	25,483	26,213	29,617	28,417	30,239	34,852
15/16	30,525	28,376	27,270	27,105	25,982	28,291	21,495	24,723				
3 Year Avg (12/13 - 14/15)	29,892	29,556	27,194	31,143	28,973	30,788	25,103	26,572	28,519	29,573	32,605	35,449

Transfer Lodgements, by month

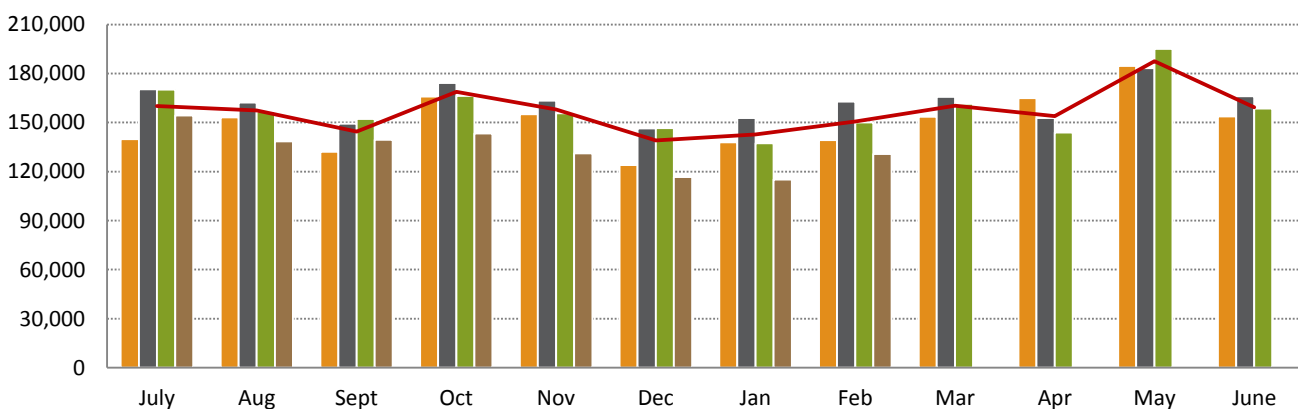
Transfer documents lodged in February 2016 (5,064) increased 4.35% from the previous month (4,853) and decreased 12.07% from February 2015 (5,759). The number of mortgages lodged during February 2016 (6,735) increased 10.21% from the previous month (6,111) and decreased 9.48% from February 2015 (7,440).



	July	Aug	Sept	Oct	Nov	Dec	Jan	Feb	Mar	Apr	May	June
12/13	6,606	7,007	6,217	6,969	7,068	7,756	5,952	6,452	7,181	8,116	8,923	9,337
13/14	7,475	7,294	6,530	8,085	7,672	8,036	6,741	6,335	7,131	7,449	8,175	9,851
14/15	7,228	7,016	6,626	7,759	6,742	7,938	6,018	5,759	7,053	6,730	6,940	8,413
15/16	6,414	5,927	6,106	6,204	5,993	6,460	4,853	5,064				
3 Year Avg (12/13 - 14/15)	7,103	7,106	6,458	7,604	7,161	7,910	6,237	6,182	7,122	7,432	8,013	9,200

Search Activities, by month

The number of searches for February 2016 (130,809) increased 13.57% from the previous month (115,180) and decreased 12.88% from February 2015 (150,146).

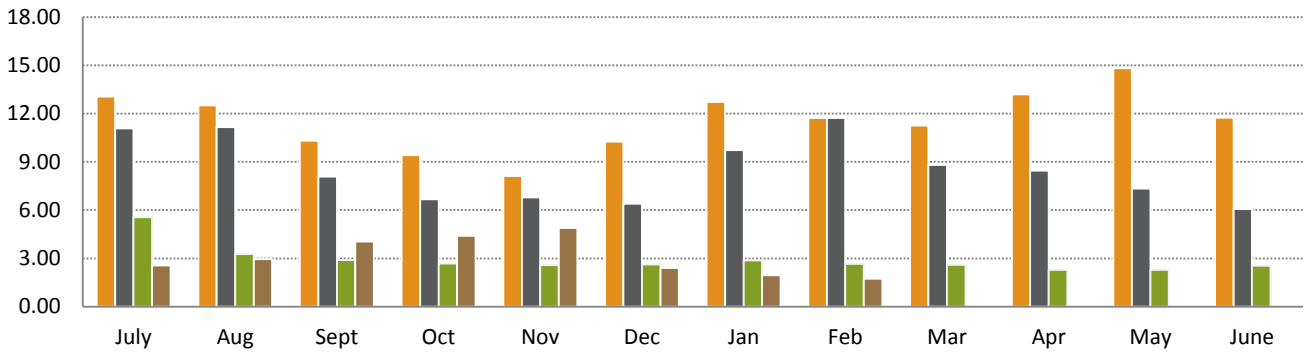


	July	Aug	Sept	Oct	Nov	Dec	Jan	Feb	Mar	Apr	May	June
12/13	139,829	153,219	132,088	165,964	155,039	124,079	137,875	139,189	153,605	165,040	184,617	153,749
13/14	170,374	162,359	149,405	174,207	163,439	146,356	152,792	162,818	165,751	152,837	183,237	166,079
14/15	170,172	156,893	152,229	166,408	155,655	146,637	137,368	150,146	161,484	143,831	195,083	158,516
15/16	154,413	138,603	139,497	143,355	131,093	116,599	115,180	130,809				
3 Year Avg (12/13 - 14/15)	160,125	157,490	144,574	168,860	158,044	139,024	142,678	150,718	160,280	153,903	187,646	159,448

Time to register a transaction against a Certificate of Title, by month

Target: 75% of documents within 5.2 days

During February 2016 the average number of days to register a transaction against a Certificate of Title was 1.74 days, a decrease compared to the previous month (1.95 days).

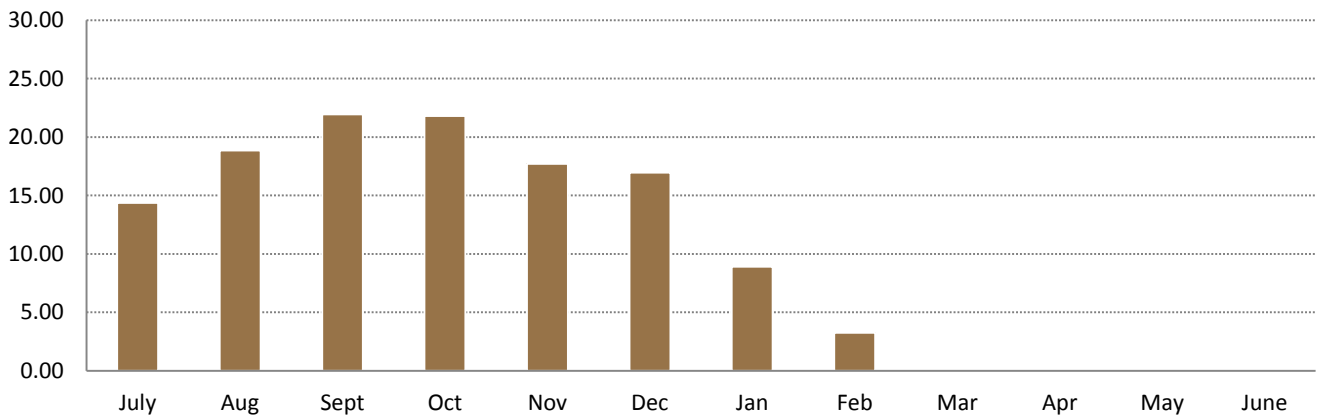


	July	Aug	Sept	Oct	Nov	Dec	Jan	Feb	Mar	Apr	May	June
12/13	13.05	12.50	10.31	9.42	8.13	10.26	12.72	11.72	11.25	13.20	14.82	11.74
13/14	11.08	11.16	8.08	6.68	6.79	6.41	9.73	11.73	8.80	8.45	7.35	6.07
14/15	5.56	3.26	2.90	2.68	2.59	2.62	2.88	2.66	2.61	2.28	2.29	2.55
15/16	2.57	2.95	4.06	4.41	4.90	2.41	1.95	1.74				

Time to register a Certificate of Title for a large subdivision, by month

Target: 10 days

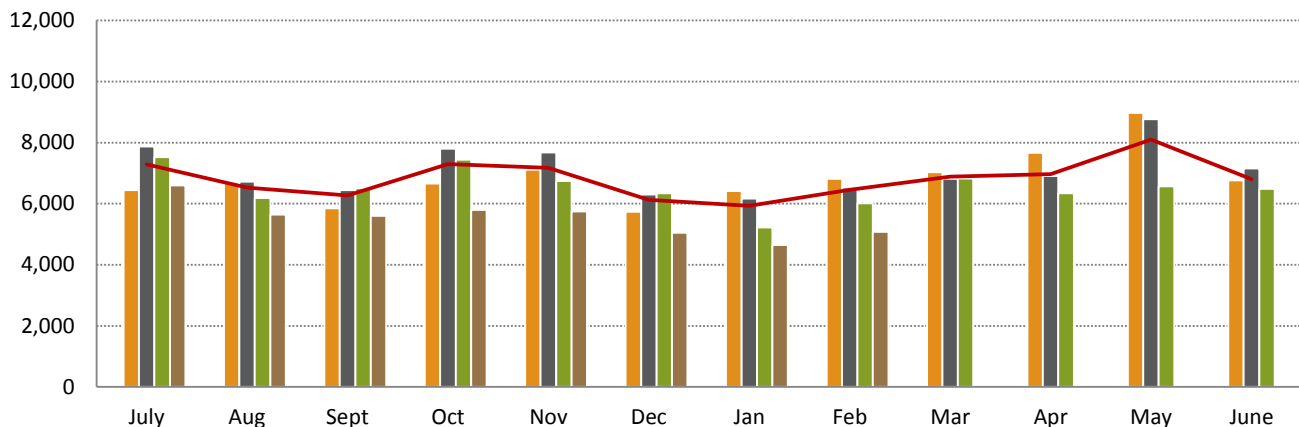
During February 2016 the average number of days to register a Certificate of Title for subdivisions was 3.25 days, a decrease compared to the previous month (8.91 days).



	July	Aug	Sept	Oct	Nov	Dec	Jan	Feb	Mar	Apr	May	June
15/16	14.36	18.84	21.95	21.80	17.72	16.95	8.91	3.25				

Electronic Advice of Sale (EAS) lodgements, by month

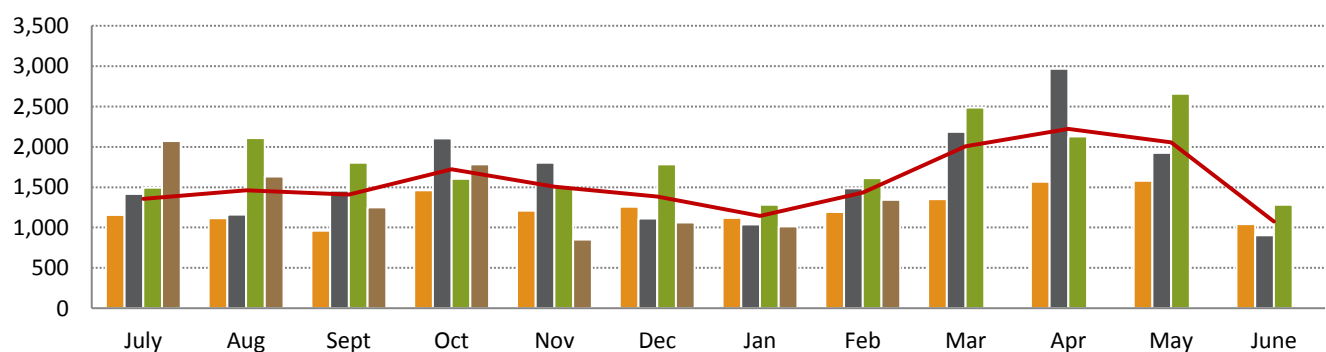
A total of 5,078 lodgements were registered during February 2016, a 9.23% increase from the previous month (4,649) and a 15.58% decrease from February 2015 (6,015).



	July	Aug	Sept	Oct	Nov	Dec	Jan	Feb	Mar	Apr	May	June
12/13	6,446	6,675	5,853	6,657	7,109	5,731	6,418	6,818	7,030	7,663	8,975	6,763
13/14	7,877	6,720	6,448	7,797	7,678	6,296	6,165	6,522	6,817	6,905	8,767	7,149
14/15	7,524	6,184	6,507	7,443	6,743	6,345	5,220	6,015	6,821	6,345	6,565	6,491
15/16	6,599	5,643	5,602	5,799	5,743	5,045	4,649	5,078				
3 Year Avg (12/13 - 14/15)	7,282	6,526	6,269	7,299	7,177	6,124	5,934	6,452	6,889	6,971	8,102	6,801

Number of subdivisional lots, by month

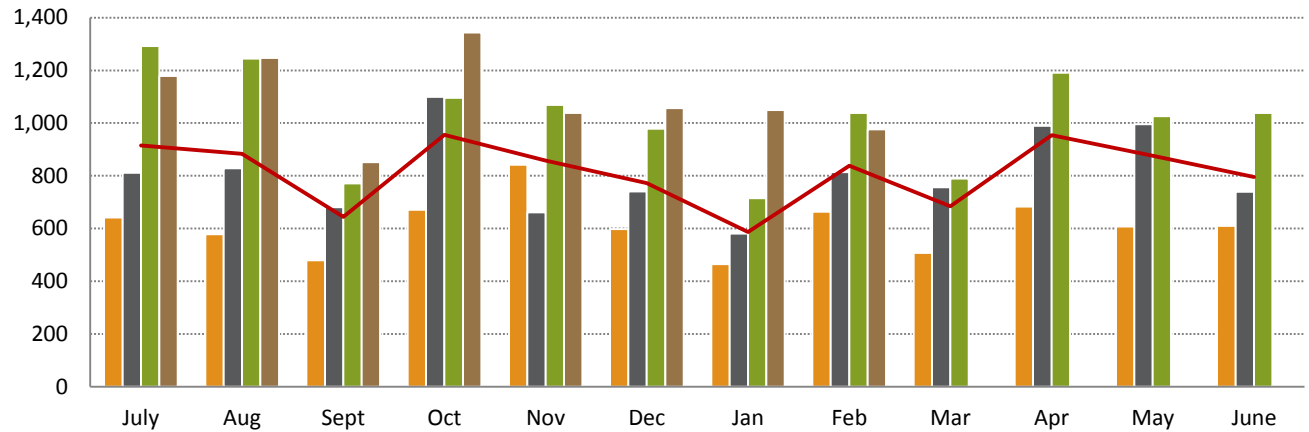
During February 2016, 1,343 sub-divisional lots were created, a 32.45% increase from the previous month (1,014) and a 16.69% decrease from February 2015 (1,612).



	July	Aug	Sept	Oct	Nov	Dec	Jan	Feb	Mar	Apr	May	June
12/13	1,158	1,115	963	1,460	1,210	1,259	1,121	1,195	1,352	1,567	1,581	1,041
13/14	1,418	1,162	1,459	2,104	1,803	1,110	1,037	1,487	2,186	2,965	1,927	904
14/15	1,493	2,106	1,803	1,602	1,503	1,781	1,281	1,612	2,487	2,128	2,658	1,284
15/16	2,072	1,634	1,252	1,781	851	1,061	1,014	1,343				
3 Year Avg (12/13 - 14/15)	1,356	1,462	1,408	1,722	1,505	1,383	1,146	1,431	2,008	2,220	2,055	1,076

Number of Strata Title Lots, by month

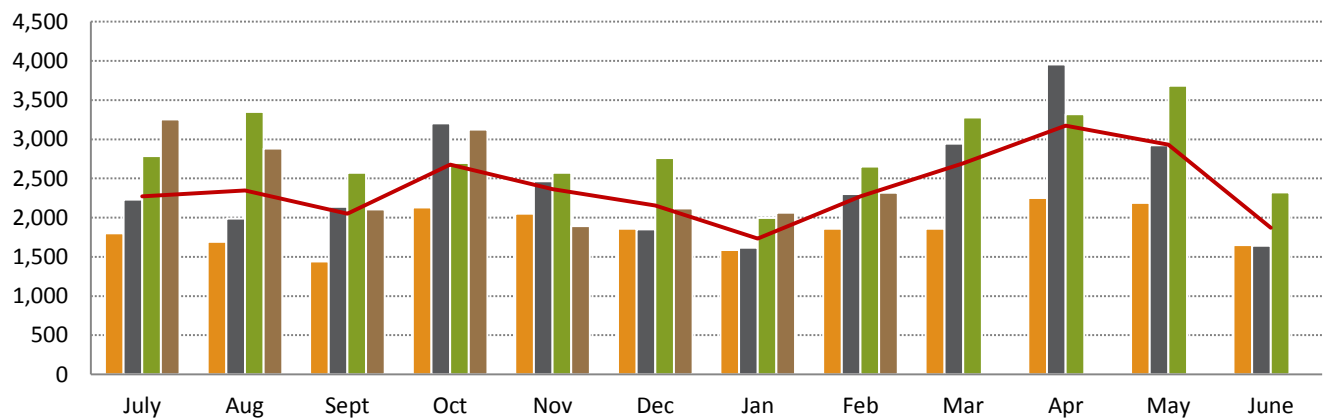
During February 2016, 240 strata plans were lodged creating 976 strata lots, a 6.96% decrease from the previous month (1,049) and a 5.97% decrease from February 2015 (1,038).



	July	Aug	Sept	Oct	Nov	Dec	Jan	Feb	Mar	Apr	May	June
12/13	642	578	479	671	842	598	465	664	507	683	608	610
13/14	812	828	681	1,100	661	741	581	814	756	990	996	739
14/15	1,292	1,245	771	1,096	1,069	979	715	1,038	789	1,191	1,026	1,039
15/16	1,179	1,247	852	1,343	1,039	1,057	1,049	976				
3 Year Avg (12/13 - 14/15)	915	884	644	956	857	773	587	839	684	955	877	796

Number of New Lots, by month

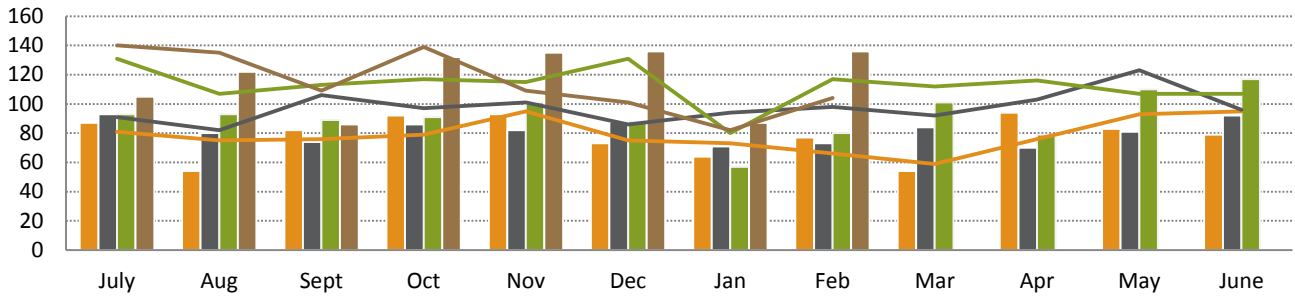
A total of 2,319 new lots were created during February 2016, a 12.41% increase from the previous month (2,063) and a 12.49% decrease from February 2015 (2,650).



	July	Aug	Sept	Oct	Nov	Dec	Jan	Feb	Mar	Apr	May	June
12/13	1,800	1,693	1,442	2,131	2,052	1,857	1,586	1,859	1,859	2,250	2,189	1,651
13/14	2,230	1,990	2,140	3,204	2,464	1,851	1,618	2,301	2,942	3,955	2,923	1,643
14/15	2,785	3,351	2,574	2,698	2,572	2,760	1,996	2,650	3,276	3,319	3,684	2,323
15/16	3,251	2,881	2,104	3,124	1,890	2,118	2,063	2,319				
3 Year Avg (12/13 - 14/15)	2,272	2,345	2,052	2,678	2,363	2,156	1,733	2,270	2,692	3,175	2,932	1,872

Strata Plans (SP) and Survey Strata Plans (SSP) lodged, by month

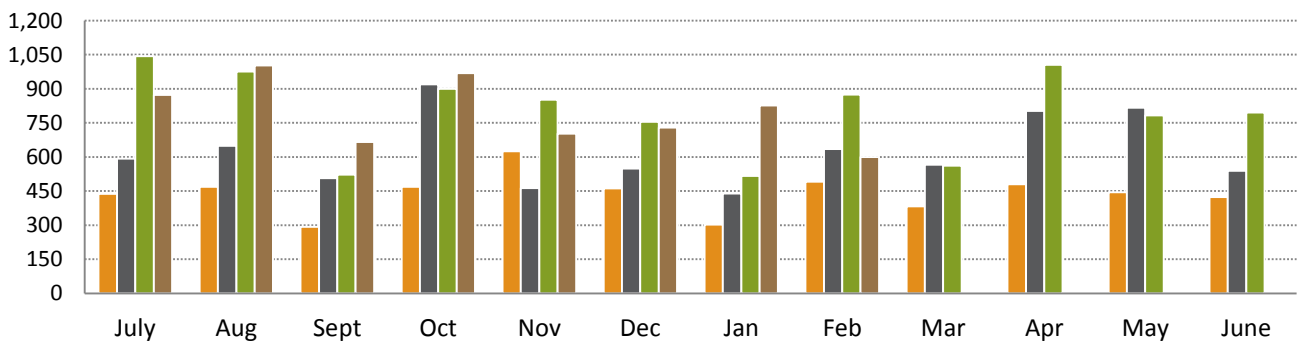
A total of 240 Strata Plans and Survey Strata Plans were lodged in February 2016, a 42.01% increase from the previous month (169) and a 21.83% increase from February 2015 (197).



	July	Aug	Sept	Oct	Nov	Dec	Jan	Feb	Mar	Apr	May	June
12/13 SP	87	54	82	92	93	73	64	77	54	94	83	79
12/13 SSP	81	75	76	79	95	75	73	66	59	76	93	95
13/14 SP	93	80	74	86	82	88	71	73	84	70	81	92
13/14 SSP	91	82	106	97	101	86	94	98	92	103	123	96
14/15 SP	93	93	89	91	101	88	57	80	101	79	110	117
14/15 SSP	131	107	113	117	115	131	80	117	112	116	107	107
15/16 SP	105	122	86	132	135	136	87	136				
15/16 SSP	140	135	109	139	109	101	82	104				

Strata Plans (SP) and Survey Strata Plans (SSP) lots created requiring WAPC approval, by month

A total of 600 lots were created requiring WAPC approval in February 2016, a 27.36% decrease from the previous month (826) and a 31.35% decrease from February 2015 (874).

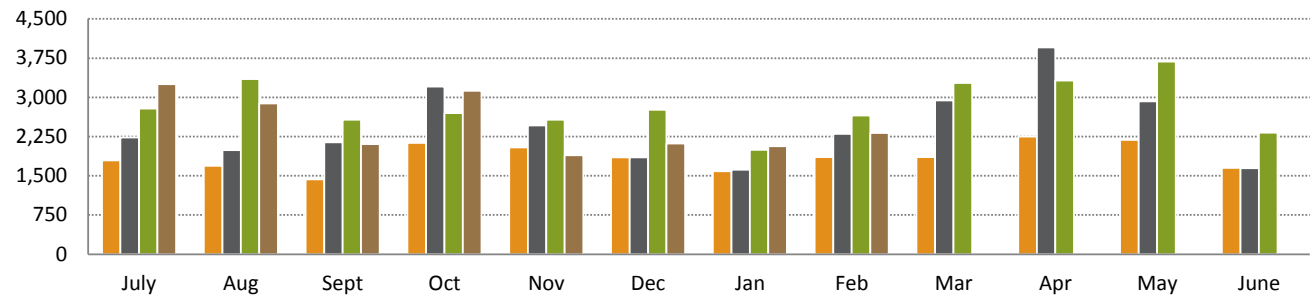


	July	Aug	Sept	Oct	Nov	Dec	Jan	Feb	Mar	Apr	May	June
12/13 WAPC	437	469	292	469	625	461	302	491	382	480	445	423
12/13 WAPC EX	205	109	187	202	217	137	163	173	125	203	163	187
13/14 WAPC	592	649	506	919	463	549	439	635	566	803	817	539
13/14 WAPC EX	220	179	175	181	198	192	142	179	190	187	179	200
14/15 WAPC	1,043	975	522	899	852	755	516	874	562	1,005	783	795
14/15 WAPC EX	249	270	249	197	217	224	199	164	227	186	243	244
15/16 WAPC	873	1,003	665	968	702	729	826	600				
15/16 WAPC EX	306	244	187	375	337	328	223	376				

Note: "Ex" represents Exempt

Strata Lots (SL) created as a % of all lots created, by month

2,319 lots were created in February 2016, of which 976 (42.09%) were strata lots, a decrease from the previous month (1,049) and a decrease compared to the same time previous year (1,038).



	July	Aug	Sept	Oct	Nov	Dec	Jan	Feb	Mar	Apr	May	June
12/13 All Lots	1,796	1,690	1,433	2,131	2,045	1,854	1,586	1,859	1,859	2,250	2,189	1,650
12/13 % SL	35.75	34.20	33.43	32.84	41.17	32.25	29.32	35.72	27.27	30.36	27.78	36.95
13/14 All Lots	2,230	1,990	2,140	3,204	2,464	1,851	1,618	2,301	2,942	3,955	2,923	1,643
13/14 % SL	36.41	41.61	31.82	34.33	26.83	40.03	35.91	35.38	25.70	25.03	34.07	44.98
14/15 All Lots	2,785	3,351	2,574	2,698	2,572	2,760	1,996	2,650	3,276	3,319	3,684	2,323
14/15 % SL	46.39	37.15	29.95	40.62	41.56	35.47	35.82	39.17	24.08	35.88	27.85	44.73
14/15 All Lots	3,251	2,881	2,104	3,124	1,890	2,118	2,063	2,319				
14/15 % SL	36.27	55.49	51.29	59.57	54.97	49.91	50.85	42.09				

Disclaimer

To the extent permitted by law, the Western Australian Land Information Authority trading as Landgate will in no way be liable to you or anyone else for any loss, damage or costs however caused (including through negligence) which may be directly or indirectly suffered arising from the use of or reliance on any information or data (including incomplete, out of date, wrong, inaccurate or misleading information or data) whether expressed or implied in the Report.

The information contained in this Report is provided by Landgate in good faith on an "as is" basis. The information is believed to be accurate and current at the date the Report was created. However changes in circumstances may affect the accuracy and completeness of the information. Landgate makes no representation or warranty as to the reliability, accuracy or completeness, merchantability or fitness for purpose of the information contained in this Report. You should not act on the basis of anything contained in this Report without first obtaining specific professional advice. It is not intended to provide the basis for any evaluation, decision or forecasting. You must make your own assessment of it and rely on it wholly at your own risk. Where there is any concern about accuracy and currency of the information in the Report, reference should be made to Landgate for verification.

To the extent permitted by law, all representations, warranties and other terms are excluded and where they cannot be excluded, any liability suffered arising out of use of the Report is limited to resupply.

Copyright

You may download and print the Report only for your personal and non-commercial use or use within your organisation for internal purposes, unless you have prior written approval.

Other than for the purposes of and subject to the conditions prescribed under the Copyright Act, you may not, in any form or by any means without Landgate's prior written permission

- adapt, reproduce, store, distribute, transmit, print, display, perform, publish or create derivative works from any part of the Report; or
- commercialise any information, products or services obtained from any part of the Report.

Requests to use copyright material should be addressed to Landgate, PO Box 2222, Midland WA 6036. Telephone +61 (0)8 9273 7373 or email: customerservice@landgate.wa.gov.au.

Any authorised reproduction however altered, reformatted or redisplayed must acknowledge the source of the information and that Landgate is the owner of copyright.